

SENERTEK DENTAL

BIOCOMPATIBLE 3D PRINTER RESINS



MORE THEN 6000 DOCTORS, DENTAL LABS CUSTOMERS AT 71 COUNTRYS

CE certified

www.senertek.com/3d

MODEL dental

ULTRA HIGH DIMENSIONS ACCURACY
NO ADOUR
NEAR ZERO SHRINKAGE



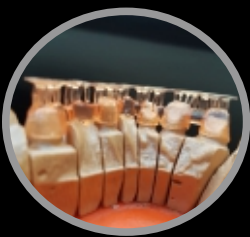
COLORS



CAST dental

**WORLD BEST SELLER CAST RESIN
ALLOW SPEED CAST
NEAR ZERO SHRINKAGE**

- Chrome cobalt
- Palladium
- Platinum
- Titanium
- Silver
- Gold



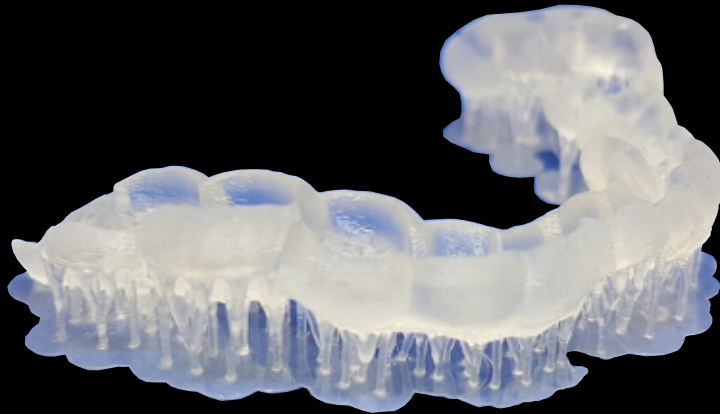
SG GUIDE

ULTRA HIGH DIMENSIONS ACCURACY

CLASS Ia product

PERFECT FIT SURGICAL GUIDES

CE certified Biocompatible resin in Class Ia expressly developed for the production of highly precise surgical guides and for all those medical applications that require a limited in time contact with the body. It works directly from intraoral digital capture devices, as a replacement of the traditional physical ones.



- Biocompatible
- Smooth Surface
- High Resolution
- High Accuracy
- Durable
- Transparent

CLASS Ia (93/42/EEC)



DENTURE

ULTRA HIGH DIMENSIONS ACCURACY

CLASS IIA product

STRONG DURABLE DENTURE BASES

CE certified Biocompatible resin in Class IIa expressly developed for the production of highly precise DENTAL DENTURE BASE and for all those medical applications



CLASS IIa (93/42/EEC)

COLORS



A1 A2 A3

- Biocompatible
- Smooth Surface
- High Resolution
- High Accuracy
- Durable



TRAY

ULTRA HIGH DIMENSIONS ACCURACY

CLASS Ia product

PERFECT FIT DENTAL TRAYS

CE certified Biocompatible resin in Class Ia expressly developed for the production of highly precise DENTAL TRAYS and for all those medical applications



CLASS Ia (93/42/EEC)

- Biocompatible
- Smooth Surface
- High Resolution
- High Accuracy
- Durable



TEMP

ULTRA HIGH DIMENSIONS ACCURACY

CLASS IIa product

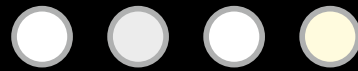
PERFECT FIT TEMPORARY TEETHS

CE certified Class IIa light curable nanocomposite for the realization of short or long-term temporary inlays, crowns and bridges. materials are available in different shades and they can be easily trimmed, shaped and polished.

For a perfect customization, they can be coated with biocompatible compounds and personalized with any kind of pigmentation.



COLORS



BLH A1 A2 A3

CLASS IIa (93/42/EEC)

- Biocompatible
- Smooth Surface
- High Resolution
- High Accuracy
- Durable



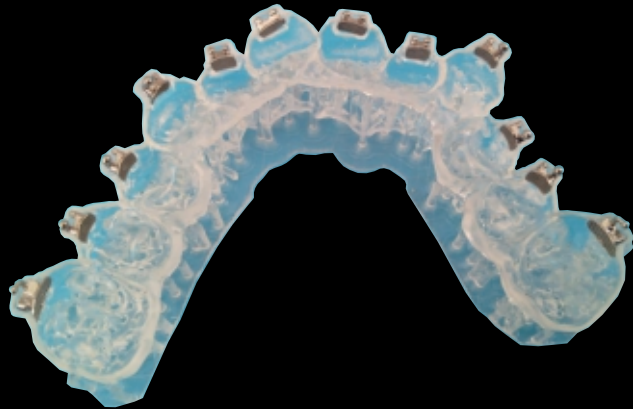
IBT

ULTRA HIGH DIMENSIONS ACCURACY

CLASS Ia product

PERFECT FIT WIRE BRACKETS

CE certified Biocompatible resin in Class Ia expressly developed for the production of highly precise DENTAL IBT and for all those medical applications



CLASS Ia (93/42/EEC)

- Biocompatible
- Smooth Surface
- High Resolution
- High Accuracy
- Durable



SPLINT

ULTRA HIGH DIMENSIONS ACCURACY

CLASS IIA product

PERFECT FIT DENTAL SPLINTS

CE certified Biocompatible resin in Class Ila expressly developed for the production of highly precise DENTAL SPLINTS ,CLEAR ALIGNERS and for all those medical applications



BLUE-PURPLE COLOR



COLORS OF PRODUCT



CLEAR



BLUE-PURPLE

CLASS Ila (93/42/EEC)

- Biocompatible
- Smooth Surface
- High Resolution
- High Accuracy
- Durable



P-CROWN

ULTRA HIGH DIMENSIONS ACCURACY

CLASS IIA product

**CE certified hybrid material for 3D printing
of permanent single crowns, inlays, onlays and veneers**



technical specification:

Color: BLT - A1 - A2 - A3

Shore hardness (D) : ≥ 95

Bi-axial Flexural Strength: ≥ 380 Mpa

Flexural Strength : ≥ 240 Mpa

Flexural Modulus : ≥ 9500 Mpa

CLASS Ila (93/42/EEC)



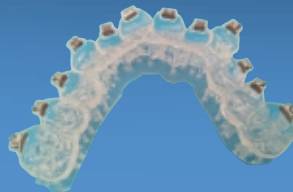
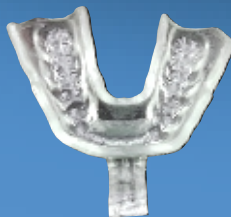
- Biocompatible
- Smooth Surface
- High Resolution
- High Accuracy
- Durable

www.senertek.com/3d

DENTAL

CE certified

BIOCOMPATIBLE 3D PRINTER RESINS



Digital dentistry solutions

ŞENERTEK ENERJİ LTD.ŞTİ
Mithat paşa cad. n:161 sener business center
Karataş-izmir
TURKEY
www.senertek.com
www.senertek.com/3d
Tel: +90 232 489 3465 (PBX)
contact: senerlabs@yahoo.com

SENERTEK 2022